

Peittoon circular economy park



Kuva: Porin kaupunki / Ari Puonti

PORI

Prizztech

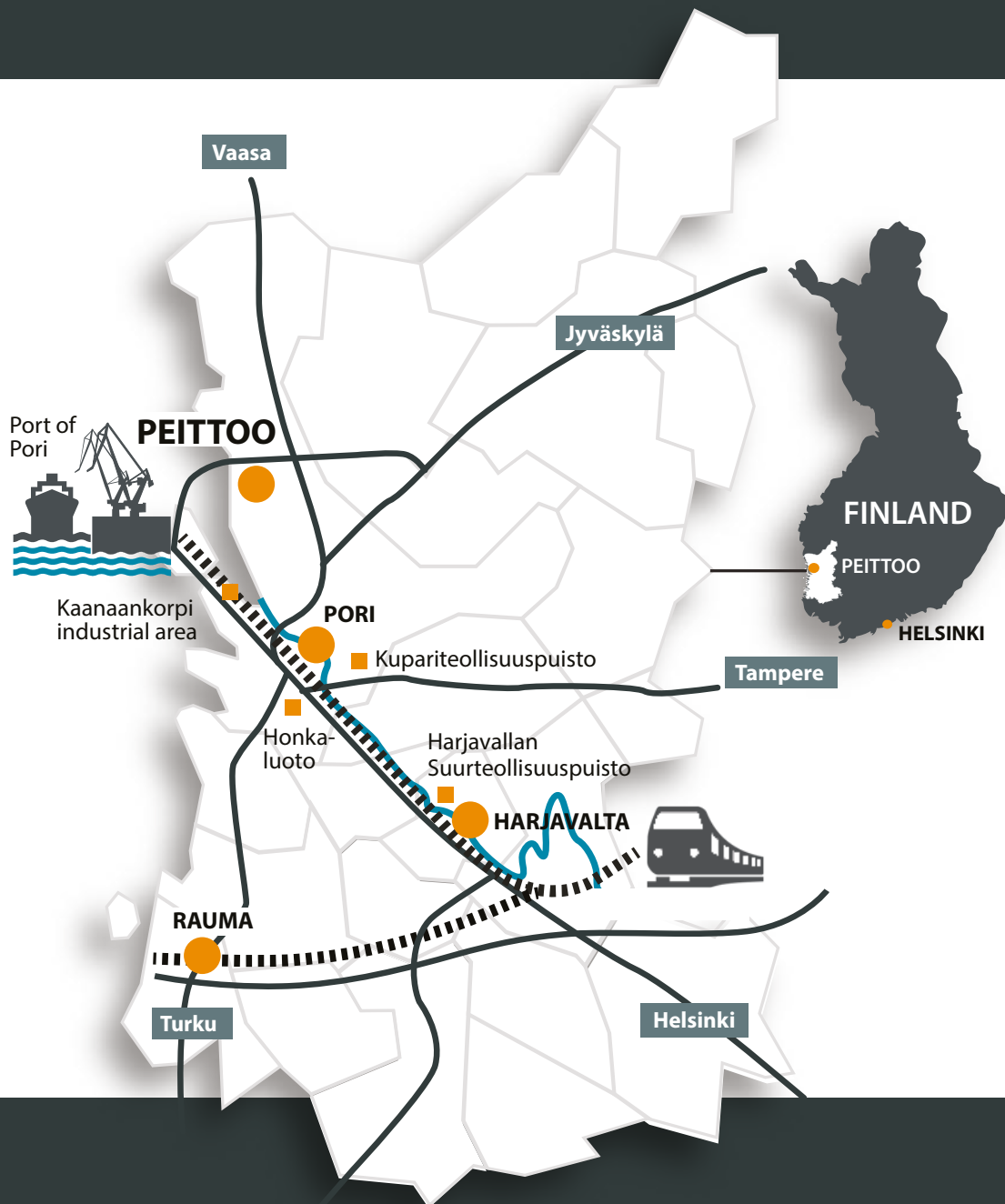
 circwaste



LIFE15 IPE FI 004

Peittoon circular economy park - for handling industrial by-products and wastes

The massive Peittoon circular economy park offers hundreds of hectares of zoned land for industrial treatment, storage and disposal of construction industry and energy production by-products. Also, renewable raw materials and renewable energy are produced in the area. Several circular economy and energy industry companies operate in the area currently. The proximity of the port, the extent of the area and the vacant plots make Peittoon an attractive place for new and expanding businesses in the circular economy.



Linkages to the industrial areas of Pori

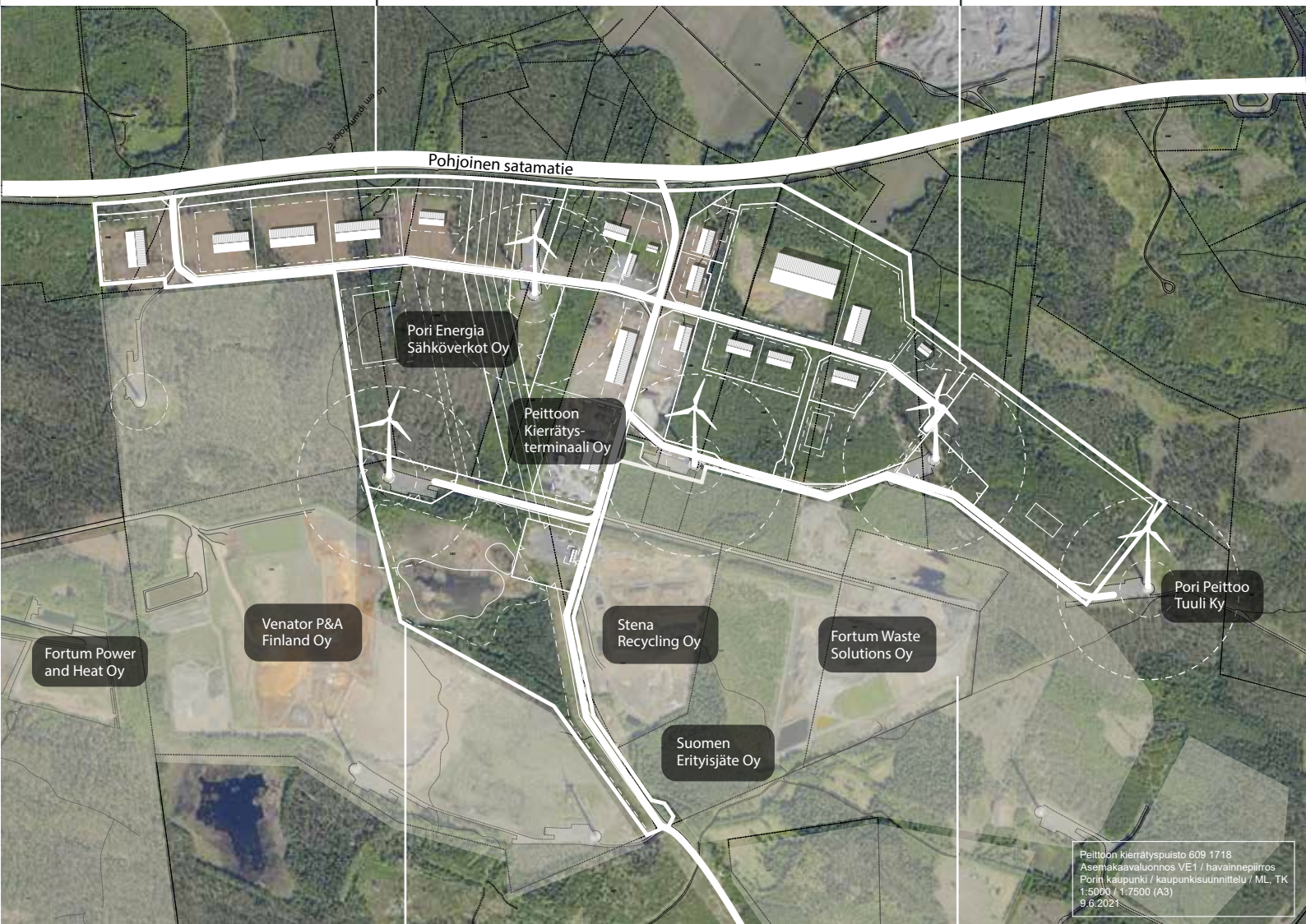
Peittoon is closely linked in terms of traffic and material flows to nearby Meri-Pori industrial areas, such as Kaanaankorpi, Mäntyluoto and Tahkoluoto and the ports of Mäntyluoto and Tahkoluoto. There is a concentration of the circular economy and energy related activities in the Meri-Pori area. The ports of Mäntyluoto and Tahkoluoto offer customers strong support for the recycling business and international exports of secondary raw materials. There is transportation infrastructure suitable for e.g. bulk products and heavy project cargo. Good rail and road connections lead to the ports and a deep fairway (15.3 m) to the port of Tahkoluoto.

Peitto area

- Circular economy park of hundreds of hectares.
- Area is located 20 km from the city center of Pori.
- Electricity, water and sewerage network available in the area: Power station (110 kV transmission line) and water supply and sewerage.
- Large scale industrial slag and ash treatment of Kaanaa pigment plant and Tahkoluoto power plants started in the 1990s.

Wind farm

- Started in 2014, 4 of the 12 wind turbines are located in Peitto zoning area.
- Wind turbines have a radius of 205 metres protection area where construction of buildings is not permitted, but can be used for material storage.



Ongoing zoning process

- The industrial company area now to be zoned is about 133 hectares.
- There are 10-20 industrial and commercial blocks, 10-30 hectares in size and 47-72 hectares in total area.
- Building rights total 220,000-260,000 sq.m. and 4-5 kilometres of streets. There are also other type of blocks in the plan e.g. area for support functions.
- The city of Pori owns 80 % of the Peitto area.

Material handling and storage

- The materials currently being processed are ash, contaminated soil, scrap metal, batteries and waste plastics and glass fibers. In addition, the area is well suited small-scale fertilizer production and wood processing (drying, chipping and storage of recovered fuel (REF)).
- Studies have been carried out on circular economy solutions for utilization of foundry sand, bioenergy terminal, construction waste, etc.
- Several investment projects planned.

PORI

Prizztech

Contact

Jouko Hautamäki
+358 44 712 4133
jouko.hautamaki@pori.fi

Janne Vartia
+358 44 701 1191
janne.vartia@pori.fi

Sami Leppimäki
+358 44 710 5344
sami.leppimaki@prizz.fi

www.prizz.fi/peitto

www.pori.fi/asemakaavat/6091718



LIFE15 IPE FI 004

Circwaste-project receives financial support from EU for the production of its materials.
The views reflected within the contents are entirely the project's own and
the EU commission is not responsible for any use of them.